

Fincantieri SI S.P.A.
 Via Genova, 1
 34121 Trieste - Italy
 T +39 040 3192316
 F +39 040 3192441

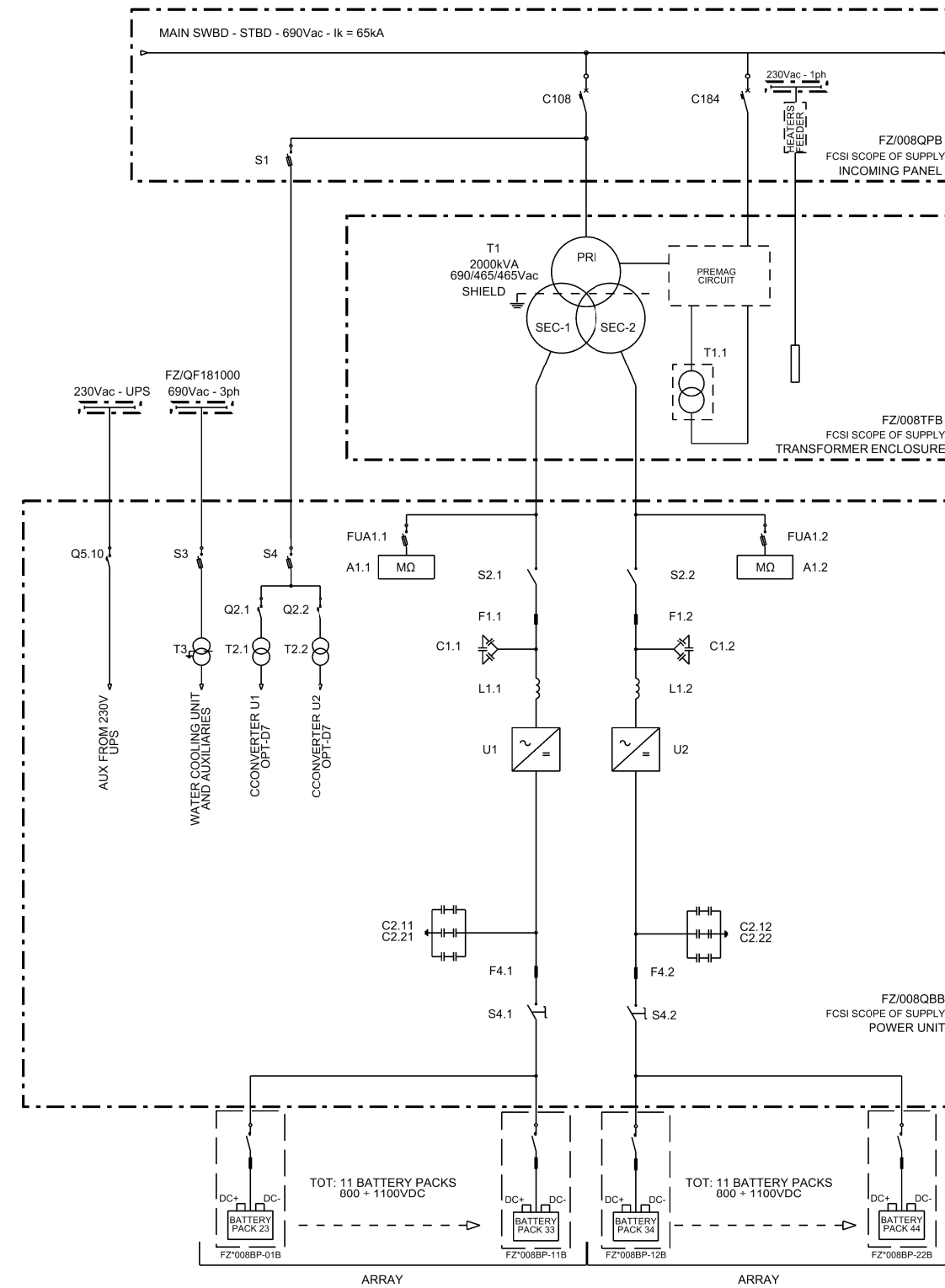
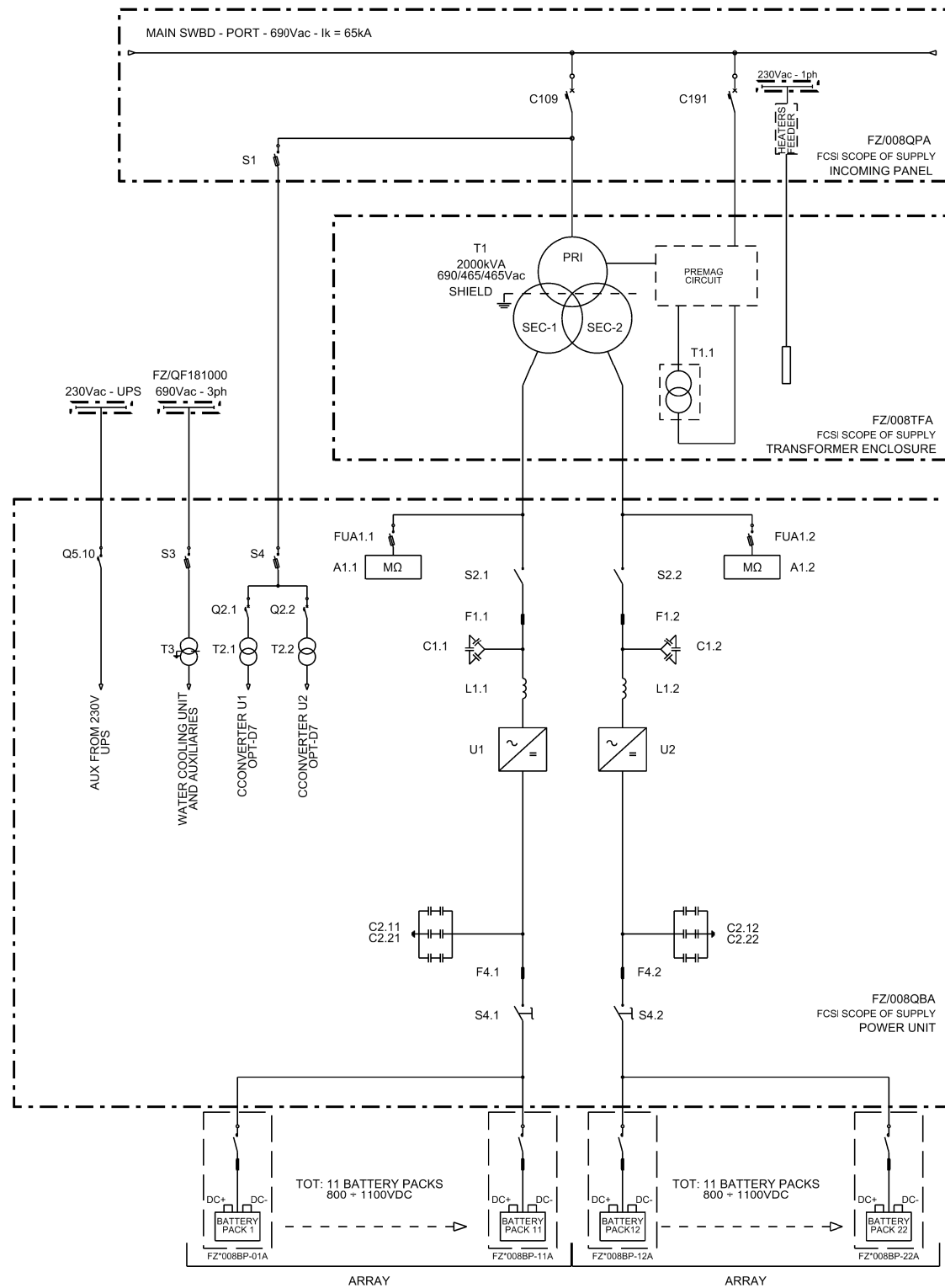


File: 8017SEDL11001				
Received specifications or drws.		Supplier doc. Number		Fincantieri SI doc. number
BS integration supply specification				8017SEDL11001
Rev.3	16/04/2019	DM	8017	Aggiornamento circuito Premag
Rev.2	02/01/2019	DM	8017	Aggiornamento numero interruttore su ramo Premag
Rev.1	05/11/2018	DM	8017	Sostituzione sezionatore con interruttore su ramo Premag
Rev.0	22/10/2018	DM	8017	Prima emissione
Alt.	Date	Signed	Issued for Projects	Alteration description
Date	Novembre 2018		System Engineering Document	
			Job	Hull
			8017	6136
Issued by			SCHEMA LINEARE GENERALE	
			Job	Hull
			8017	6137
Approved by	D.Mondo		Drwg number	8017SEDL11001
Checked by	S.Casini		Alteration Item	
Issued by	A.Retti			
			3	Enclosed sheets: 3
This document is the property of Fincantieri SI - Trieste. It shall not be used, reproduced or communicated to unauthorized persons				

Document	Number	Rev.	Job	Sheet
Schema Lineare Generale	8017SEDL11001	3	8017	2 of 3

- INDICE.....2
- SCHEMA LINEARE GENERALE (FCSI SCOPE).....3

GRIMALDI - SINGLE LINE DIAGRAM (FCSI scope of supply)



Note: all battery packs and cables are out of scope of FCSI supply

REVISION	DESCRIPTION
01	PREMAG CIRCUIT DRAWING
02	DISCONNECTION REPLACES SWITCH ON PREMAG FEEDER
01	FIRST ISSUE

FINCANTIERI		Fincantieri S.p.a. 34123 TRIESTE (TS) ITALY	
GRIMALDI - SLD			
A. BETTI	12.11.2018	REV.001	03
F. CASALI	12.11.2018	REV.002	03
G. MARINO	12.11.2018	REV.003	03
Scale: XXX		Sheet: 1 of 1	